

HARTA MicroLumi XS Microplate Luminometer

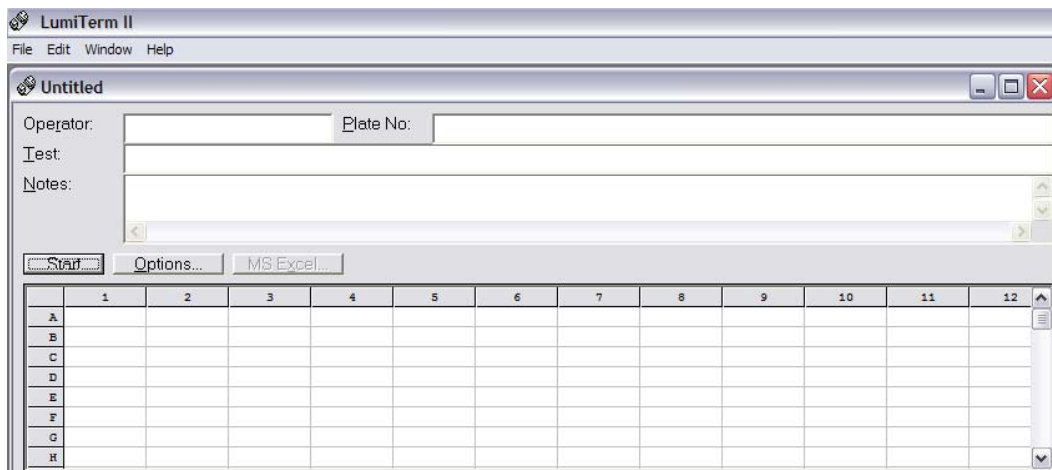
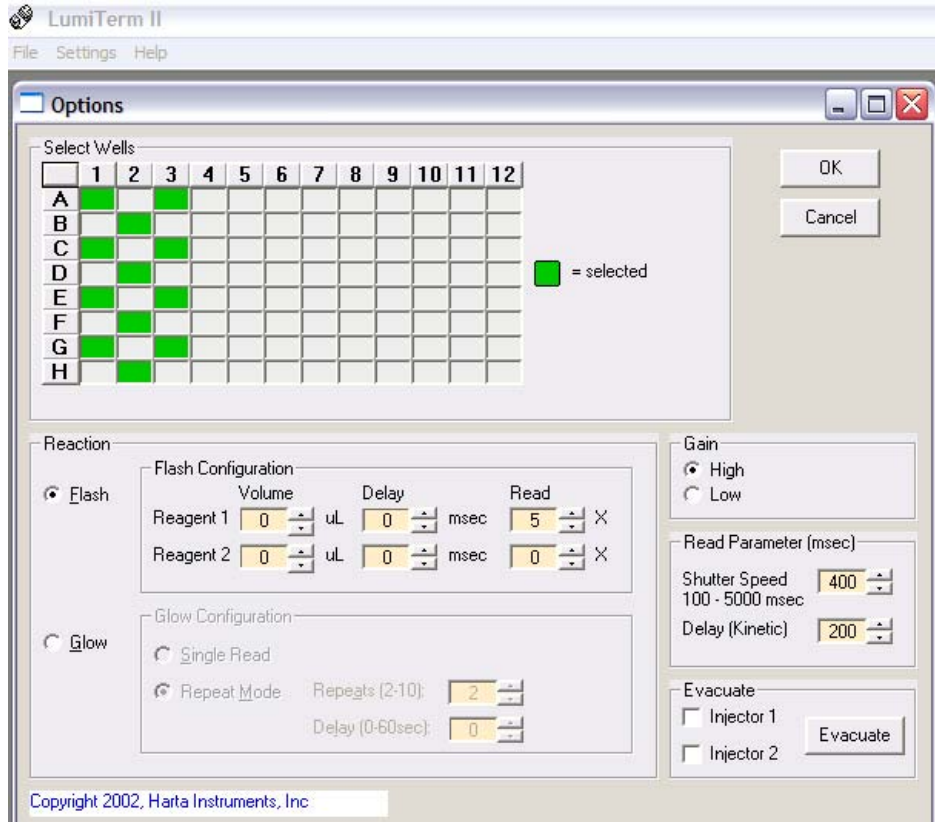
Specifications:

Sensitivity:	10^{-19} moles of luciferase using Promega Bright-Glo assay
Linear Dynamic Range:	> 6 decades
Crosstalk:	< 5×10^{-6}
Detector:	Specially selected Photomultiplier Tube (PMT) Spectral Response : 300 – 650 nm Peak Wavelength: 420 nm Dark Current: approx 1 nA
Detection Method:	Digital Photon Counting
Shutter speed:	100 – 1000 msec
Detection Mode:	Glow or Flash luminescence (Flash requires optional injectors)
Reading options:	Glow: Single read, Plate repeat with delay (up to 10 repeats) Flash: Single read, Kinetic reads with delay (up to 10 kinetics)
Reading method:	Direct access, only reads selected wells, skipping unselected wells.
Plate Format:	96 well, (8 X 12) format
Reading Speed:	Approximately 100 seconds / full plate (Glow mode with default shutter speed)
User interface:	User-friendly Lumiterm II [®] software, controls all machine functions, is included. Lumiterm II [®] exports data to MS-Excel with a click of a button
Computer interface:	RS232C standard (cable supplied), USB port adapter optional
Options:	Up to 2 Flash injectors, USB port adapter, Hard carrying case
Power:	0.25A @ 100-240VAC, 50/60 HZ (universal), US cable supplied
Dimension:	14.5" D x 8" W x 6.7" H, Weight: 11.0 Lbs (5 Kg)
Compliance:	UL, CSA, CE
Mechanism:	Patented X-Y scanner, with Direct Drive Stepping Motors

Construction: Very robust CNC machined aluminum custom extrusions, ball bearings on all rotating parts, 1/4" diameter stainless- steel acme drive screws, aluminum pulleys, kevlar parallel-screw drive belts, black anodized finish internally.

Warranty: 1 year parts and labor, optional extended warranty available.

Protected by US patent #5,657,118, international patents pending.



sample screen of Lumiterm II®.

HARTA INSTRUMENTS, INC.

8 RUSSELL AVE UNIT 106, GAITHERSBURG, MD 20877, USA. PHONE: 301-948-8868 FAX: 301-948-3816
 Visit our website: WWW.HARTAINSTRUMENTS.COM.